

Deseen International

Anchor chain-Anchor chain fittings

认可证书 APPROVAL CERTIFICATES

- 率先通过中国船级社质量认证公司认证
- Taking the lead in achieving quality management system certificate of CCS(China Classification Society)certification company

- 率先通过中国船级社CCS及国外各大船级社工厂及产品认可
- Taking the lead in achieving the works and products approval certificates of CCS (china classification society)and major foreign classification societies.



RINA IS ALSO AVAILABLE.



检测设备 INSPECTION EQUIPMENTS

完善的检测设备和一流的技术精英，使公司的生产能力和研发能力达到国际先进水平，跨入同行前列。

在引进先进技术的同时，公司还配置了现代化的检测设备和和自动化生产线，使产品质量得到可靠的保证，受到国家质量技术监督部门的赞可。

Perfect testing equipment and first-class technical elites ensure the production and R&D capability of the company to reach the international advanced level, and ahead of competitors.

In addition to introduce of advanced technology, the company also configures equipped with modern inspection equipments and automatic production lines, which offer reliable guarantee for the products' quality, and have been praised by CSBTS (state bureau of quality technical supervision).



Deseen International
Anchor chain-Anchor chain fittings



高质量的产品势必要有超一流的服务。

集团始终坚持顾客就是上帝、服务至上的原则，不断完善服务内容，提高服务质量。致力于世界范围内建立具有特色的立体服务体系。

High-quality products should be supported by first-class services.

The Group always sticks to the principle that customer is God and service is supreme, continuously improve content and quality of service, committes to establish a worldwide service system with The Group features.

一种好的销售模式和一支经验丰富的高素质营销团队是企业产品畅销不衰的关键。具有先进营销理念，站在一个更高的角度，通过自身的刻苦努力来处理企业与社会各方面的关系，努力营造良好的社会环境，为企业拓展了更加广阔的生存空间。

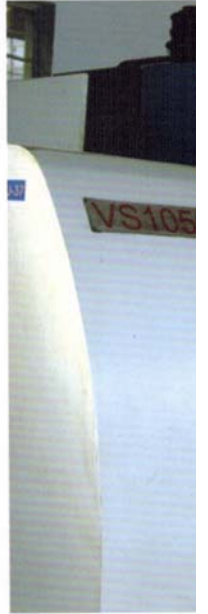
A good sales mode and an experienced high-quality marketing team are the key of the enduring excellent sales performance of the company. With the advanced marketing concept, the employees of The Group stand at a higher position, make great efforts to settle the relationships satisfactorily between the company and all aspects of society , make effort to create a favorable social emironment, expand the living space for the company.



生产设备 PRODUCTION EQUIPMENTS

科技与管理的进步和精良设备的可靠保证。公司投入大量资金引进国内外先进的生产设备，使公司的生产能力达到国际先进水平，并跨入同行前列。

The advancement of technology and management, coupled with sophisticated equipment, work as reliable guarantee for quality. The Group Anchor Chain has invested a large amount of capital in domestic and overseas advanced production equipment to make production capacity reach international advanced level and ahead of our competitors.



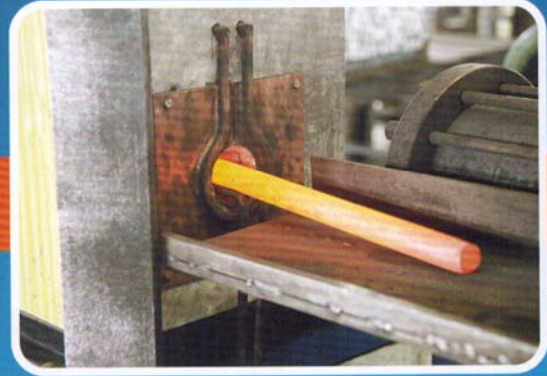
Deseen International
Anchor chain-Anchor chain fittings



锚链制造工艺流程



取料 Cutting



加热 Heating



热处理 Heat Treatment



打磨 Grinding



拉力测试 Tensile Testing

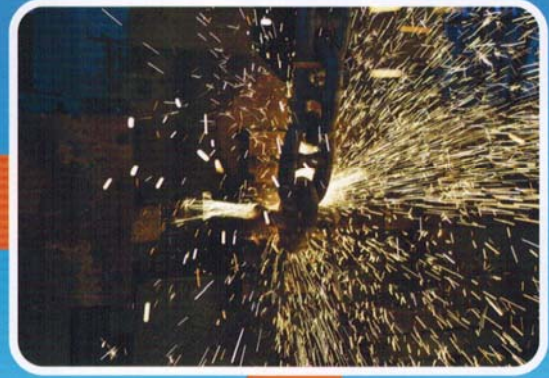


磁粉探伤 MT

Manufacturing Process of Anchor Chain



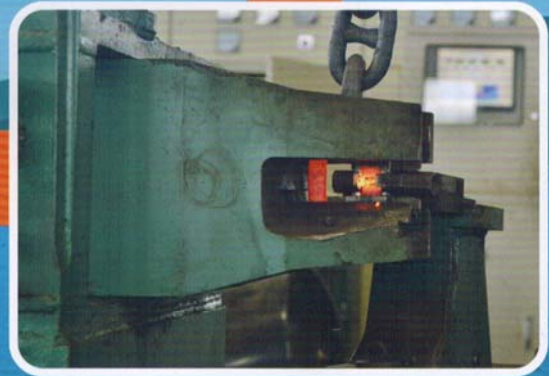
弯档 Bending



焊接 Flash Butt Welding



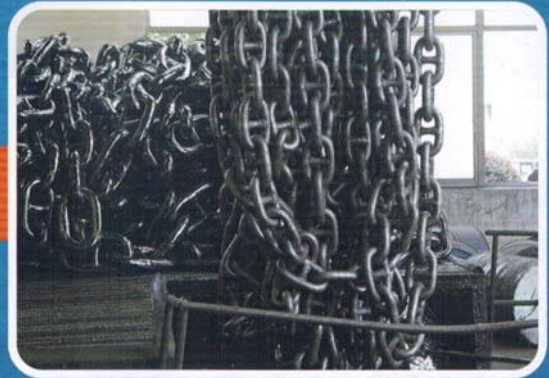
压档 Stud Setting



去刺 Trimming

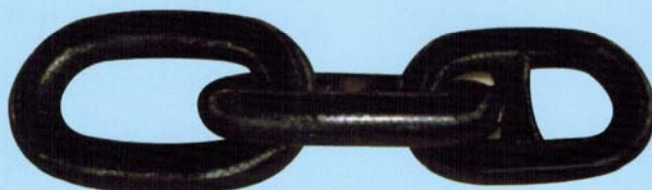
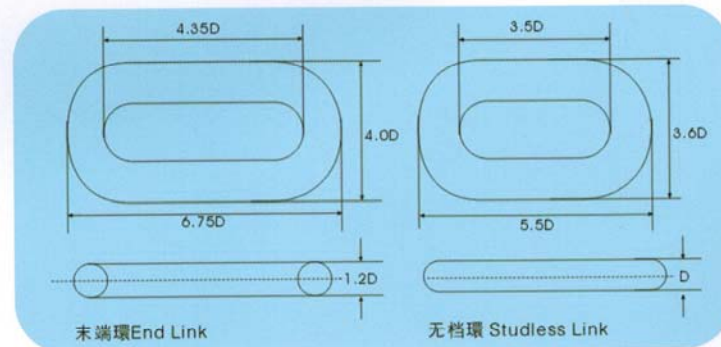
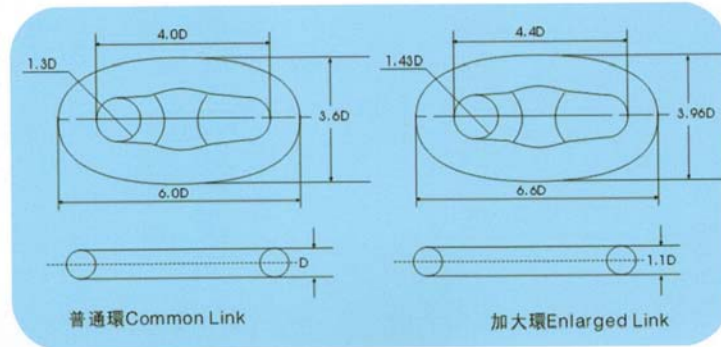
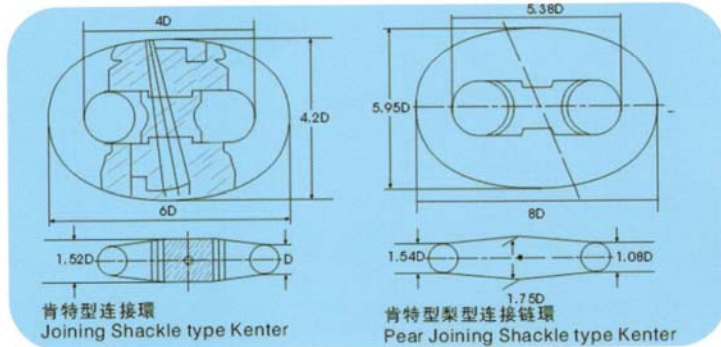


滚抛 Roll Polishing

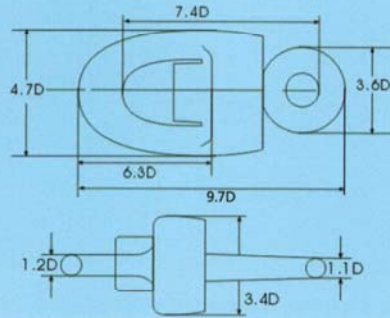
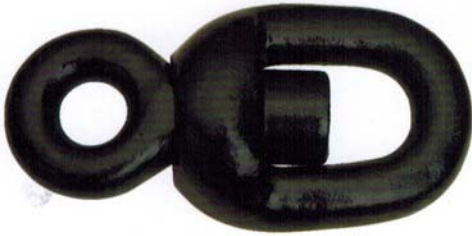


浸漆 Painting

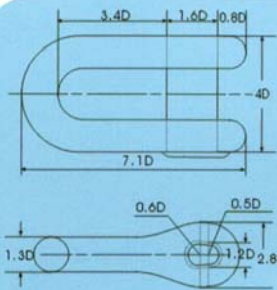
锚链附件 ANCHOR CHAIN ACCESSORY



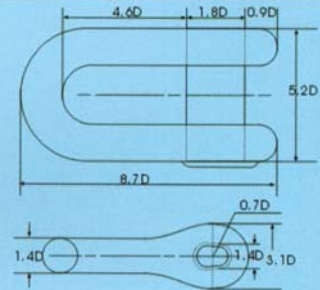
锚链附件 ANCHOR CHAIN ACCESSORY



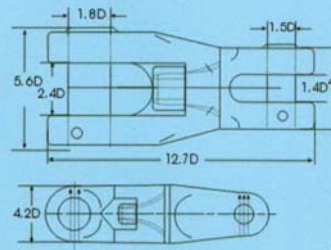
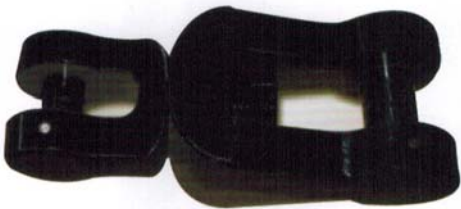
转环 Swivel(SW)



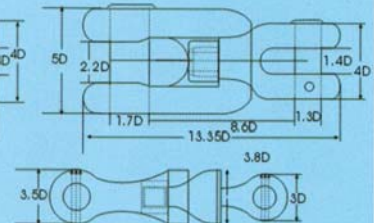
D型连接卸扣 Joining Shackle type D



D型末端卸扣 End Shackle type D



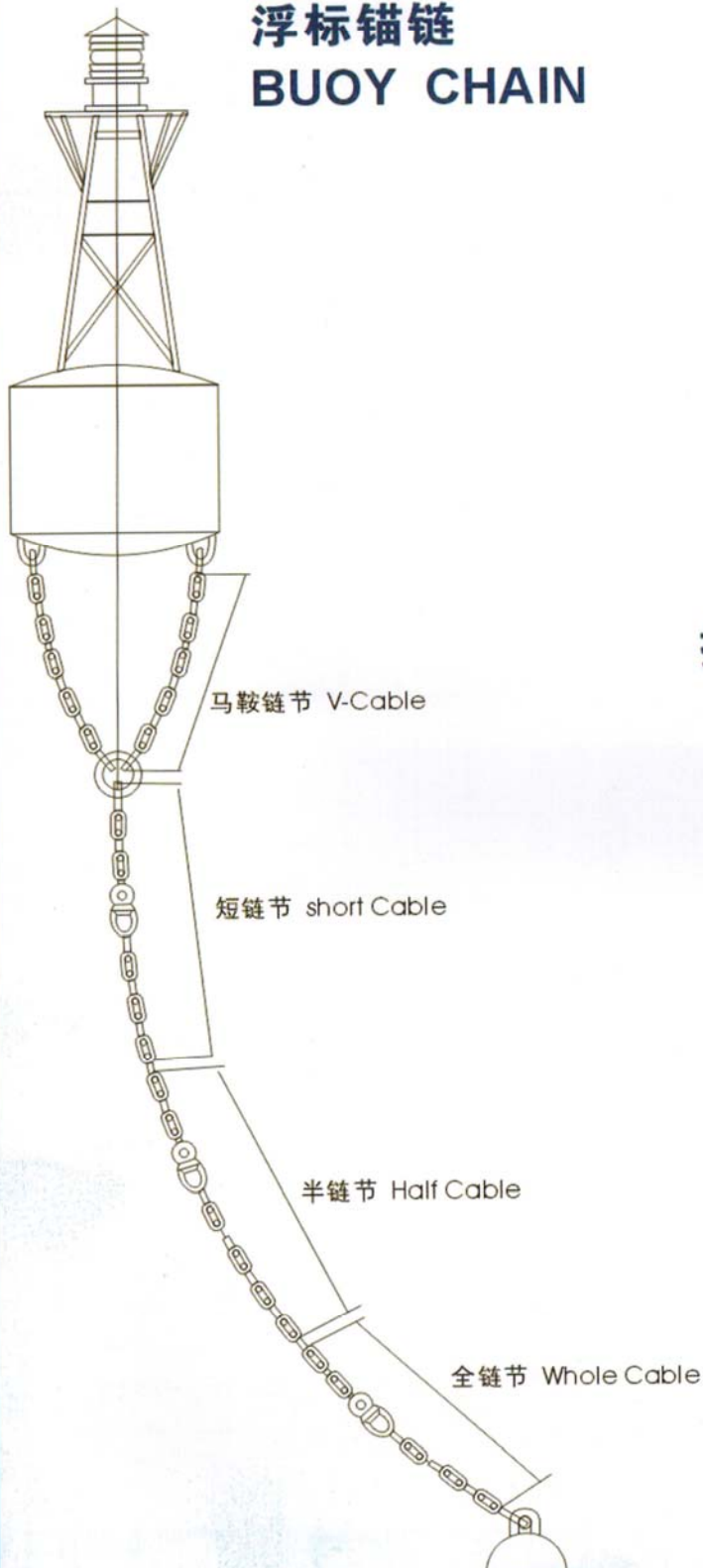
锚旋转卸扣
Anchor Swivel Shackle A.SW.S(a)



锚旋转卸扣
Anchor Swivel Shackle A.SW.S(b)



浮标锚链 BUOY CHAIN



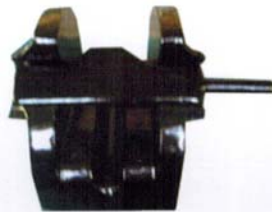
捆扎链 LASHING CHAIN



锚泊系泊设备 MOORING EQUIPMENT



A型螺旋掣链器
CB/T178-96



闸刀掣链器
CB*286-84



滚轮闸刀掣链器
CB/T3844-2000



导链滚轮
CB/T290-95



A型锚链舱眼环
CB807-75



B型锚链舱眼环
CB807-75



掣链钩
CB*288-1964



锚链拆卸工具
CB*3276-1985



锚唇



A型掣锚索
CB*877-1984

Deseen International
Anchor chain-Anchor chain fittings

试验负荷 TESTING LOAD

有档锚链及附件试验负荷

TESTING LOAD OF STUD LINK ANCHOR CHAIN AND ACCESSORIES

链径 Chain Diameter	2级 Grade2		3级 Grade3		Approx. mass Pounds Per15 Fathoms	链径 Chain Diameter	2级 Grade2		3级 Grade3		Approx. mass Pounds Per15 Fathoms
	拉力负荷 Proofload	拉断负荷 Break load	拉力负荷 Proofload	拉断负荷 Break load			拉力负荷 Proofload	拉断负荷 Break load	拉力负荷 Proofload	拉断负荷 Break load	
	C=1422	C=1991	C=1991	C=2844			C=1422	C=1991	C=1991	C=2844	
In	Lbf	Lbf	Lbf	Lbf	Lb	In	Lbf	Lbf	Lbf	Lbf	Lb
9/16	19300	27000	27000	38600	297	21/2	346000	484000	484000	692000	5402
5/8	23700	33200	33200	47500	379	29/16	363000	507000	507000	726000	5679
11/16	28600	40100	40100	57300	420	25/8	379000	530000	530000	758000	5966
3/4	34000	47600	47600	68000	492	211/16	396000	554000	554000	792000	6263
13/16	39800	55700	55700	79500	584	23/4	413000	578000	578000	826000	6570
7/8	46000	64400	64400	91800	676	213/16	431000	603000	603000	861000	6878
15/16	52600	73700	73700	105000	779	27/8	449000	628000	628000	897000	7196
1	59700	83600	83600	119500	881	215/16	467000	654000	654000	934000	7513
11/16	67200	94100	94100	135000	994	3	485000	679000	679000	970000	7841
11/8	75000	105000	105000	150000	1107	31/16	504000	705000	705000	1008000	8180
13/16	83400	116500	116500	167000	1251	31/8	523000	732000	732000	1046000	8528
11/4	92200	129000	129000	184000	1384	33/16	542000	759000	759000	1084000	8877
15/16	101500	142000	142000	203000	1527	31/4	562000	787000	787000	1124000	9235
13/8	111000	155000	155000	222000	1671	35/16	582000	814000	814000	1163000	9594
17/16	120500	169000	169000	241000	1825	33/8	602000	843000	843000	1204000	9973
11/2	131000	183500	183500	262000	1989	37/16	622000	871000	871000	1244000	10353
19/16	142000	198500	198500	284000	2142	31/2	643000	900000	900000	1285000	10763
15/8	153000	214000	214000	306000	2296	39/16	664000	929000	929000	1327000	11173
111/16	166500	229000	229000	327000	2470	35/8	685000	958000	958000	1369000	11583
13/4	176000	247000	247000	352000	2655	33/4	728000	1019000	1019000	1455000	12300
113/16	188500	264000	264000	377000	2860	37/8	772000	1080000	1080000	1543000	13223
17/8	201000	281000	281000	402000	3055	315/16	794000	1111000	1111000	1587000	13633
115/16	214000	299000	299000	427000	3260	4	816000	1143000	1143000	1632000	14043
2	227000	318000	318000	454000	3444	41/8	862000	1207000	1207000	1724000	14965
21/6	241000	337000	337000	482000	3659	41/4	908000	1272000	1272000	1817000	15785
21/8	255000	357000	357000	510000	3885	43/8	956000	1338000	1338000	1911000	16605
23/16	269000	377000	377000	538000	4121	41/2	1004000	1405000	1405000	2008000	17528
21/4	284000	396000	396000	570000	4356	45/8	1053000	1474000	1474000	2105000	18450
25/16	299000	418000	418000	598000	4602	43/4	1102000	1543000	1543000	2204000	19373
23/8	314000	440000	440000	628000	4848	47/8	1153000	1613000	1613000	2305000	20398
27/16	330000	462000	462000	660000	5084	5	1203000	1685000	1685000	2407000	21423

1、试验力 (in lbf) = cxd² (44-2.032d) (d in inches)

NOTE : test load (in lbf) = cxd² (44-2.032d)

2、换算表 : Conversion table

1inch=25.4mm 1lb=0.4536kg 1fathoms=1.8288m

Deseen International

Anchor chain-Anchor chain fittings

有档锚链及附件试验负荷

TESTING LOAD OF STUD LINK ANCHOR CHAIN AND ACCESSORIES

链径 Chain Diameter	2级 Grade2		3级 Grade3		质量近似值 Approx. mass (27.5m)	链径 Chain Diameter	2级 Grade2		3级 Grade3		质量近似值 Approx. mass (27.5m)
	拉力负荷 Proofload	拉断负荷 Break load	拉力负荷 Proofload	拉断负荷 Break load			拉力负荷 Proofload	拉断负荷 Break load	拉力负荷 Proofload	拉断负荷 Break load	
	C=0.0098	C=0.0137	C=0.0137	C=0.0198			C=0.0098	C=0.0137	C=0.0137	C=0.0198	

mm	KN	KN	KN	KN	Kg	mm	KN	KN	KN	KN	Kg
14	82	116	116	165	128	64	1560	2190	2190	3130	2516
16	107	150	150	216	150	66	1660	2310	2310	3300	2676
17.5	127	179	179	256	197	68	1750	2450	2450	3500	2885
19	150	211	211	301	236	70	1840	2580	2580	3690	3010
20.5	175	244	244	349	268	73	1990	2790	2790	3990	3274
22	200	280	280	401	324	76	2150	3010	3010	4300	3548
24	237	332	332	476	370	78	2260	3160	3160	4500	3737
26	278	389	389	556	431	81	2410	3380	3380	4820	4030
28	321	449	449	642	496	84	2580	3610	3610	5160	4334
30	368	514	514	735	563	87	2750	3850	3850	5500	4650
32	417	583	583	833	635	90	2920	4090	4090	5840	4976
34	468	655	655	937	712	92	3040	4260	4260	6080	5199
36	523	732	732	1050	800	95	3230	4510	4510	6440	5544
38	581	812	812	1160	888	97	3340	4680	4680	6690	5780
40	640	896	896	1280	1033	100	3530	4940	4940	7060	6143
42	703	981	981	1400	1084	102	3660	5120	5120	7320	6398
44	769	1080	1080	1540	1197	105	3850	5390	5390	7700	6773
46	837	1170	1170	1680	1310	107	3980	5570	5570	7960	7033
48	908	1270	1270	1810	1438	111	4250	5940	5940	8480	7569
50	981	1370	1370	1960	1546	114	4440	6230	6230	8890	7983
52	1060	1480	1480	2110	1661	117	4650	6510	6510	9300	8409
54	1140	1590	1590	2270	1791	120	4850	6810	6810	9720	8863
56	1220	1710	1710	2430	1926	122	5000	7000	7000	9990	9143
58	1290	1810	1810	2600	2086	124	5140	7200	7200	10280	9399
60	1380	1940	1940	2770	2249	127	5350	7490	7490	10710	9830
62	1470	2060	2060	2940	2361						

无档锚链试验负荷

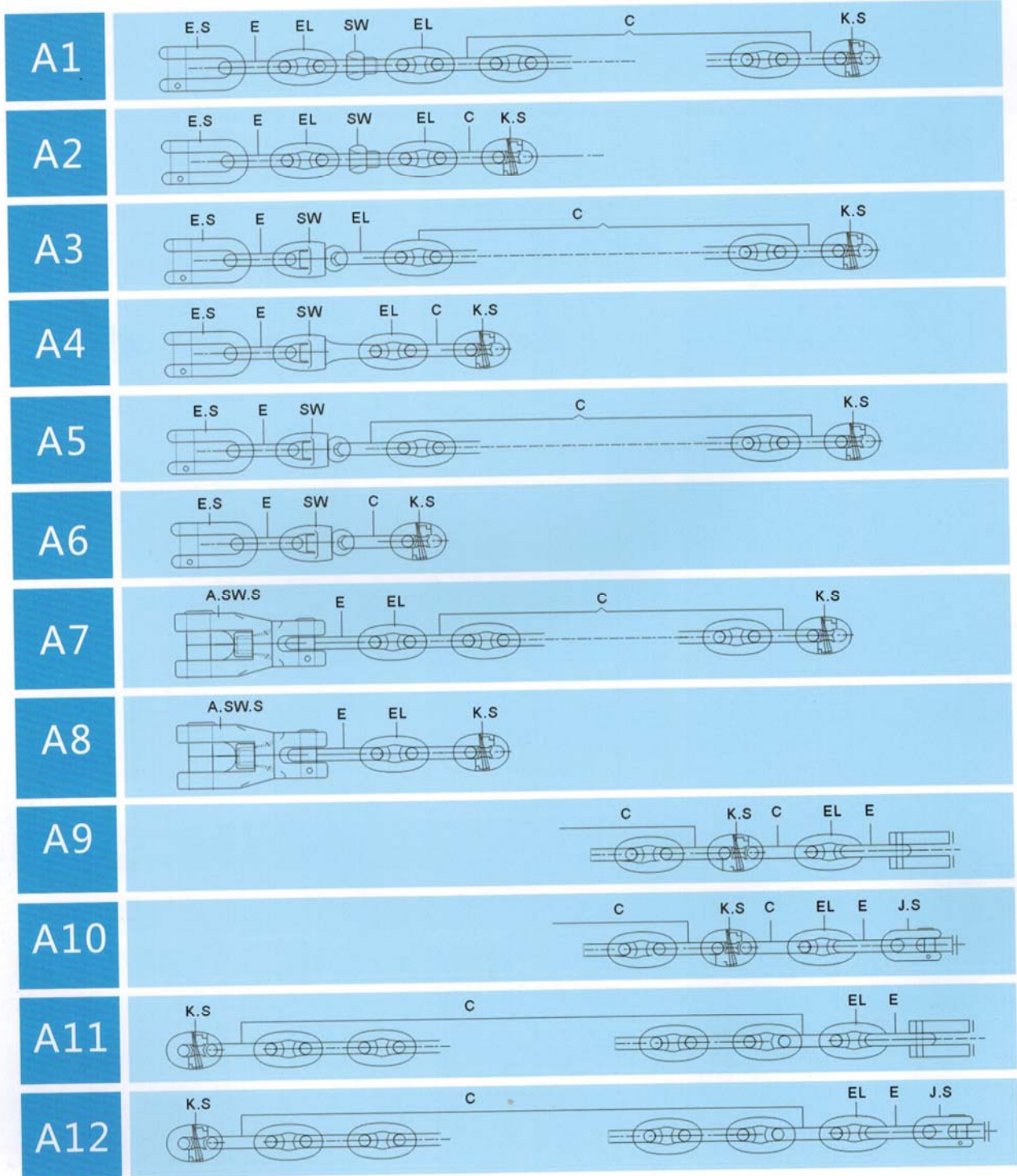
TESTING LOAD OF STUDLESS LINK ANCHOR CHAIN

链径 Chain Diameter	1级 Grade1		2级 Grade2		质量近似值 Approx. mass (27.5m)	链径 Chain Diameter	1级 Grade1		2级 Grade2		质量近似值 Approx. mass (27.5m)
	拉力负荷 Proofload	拉断负荷 Break load	拉力负荷 Proofload	拉断负荷 Break load			拉力负荷 Proofload	拉断负荷 Break load	拉力负荷 Proofload	拉断负荷 Break load	

mm	KN	KN	KN	KN	Kg	mm	KN	KN	KN	KN	Kg
12.5	28.75	57.81	41.20	82.60	93.5	32	188.42	378.88	265.60	531.20	664.6
14	34.78	69.93	51.00	101.90	117.15	34	212.70	427.72	299.90	599.80	752.9
16	47.10	94.72	66.20	132.30	152.9	36	238.46	479.52	336.10	672.30	861.2
17.5	56.35	113.31	78.89	157.78	182.8	38	265.70	534.28	374.40	748.70	957.5
19	66.42	133.57	93.60	187.20	249.5	40	249.40	592.00	414.50	829.10	1056.2
20.5	77.33	155.49	108.64	217.27	275.4	42	324.58	652.68	457.70	915.30	1166.5
22	89.06	179.08	125.40	250.90	328.6	44	356.22	716.32	502.70	999.60	1270.4
24	105.98	213.25	149.90	298.90	385.0	46	389.34	782.92	548.80	1097.60	1396.6
26	124.38	250.12	175.40	350.80	449.1	48	423.94	852.48	597.80	1195.60	1520.6
28	144.26	290.08	203.80	406.70	516.7	50	460.00	926.09	648.80	1239.60	1650.0
30	165.60	333.00	234.20	467.50	589.4						

锚链连接形式 ANCHOR CHAIN ASSEMBLY

A. 肯特式链接环连接形式 JOINING FORMS FOR K.S



锚链连接形式 ANCHOR CHAIN ASSEMBLY

B. “D” 型连接卸扣连接形式 JOINING FORMS FOR “D” J.S.

